

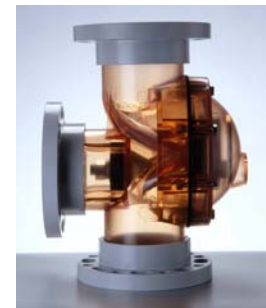
## Vessels Feature:

- Access manway located on tank head, providing easy access for installation and service.
- Solid composite construction - does not employ a bladder.
- Entire vessel including domes is wound on a computer controlled, multi-axis machine.
- Design does not rely on Adhesive Joints which can be sensitive to temperature variation and application error.
- Vessels feature proprietary PARACOTE® All-Weather Exterior Coating with UV Inhibitors.
- 15 year vessel warranty - Non-Prorated for the first three years.
- Automatic and manual air relief systems.
- Media evacuation port and winterizing drain port.
- Laterals are injection-molded with reverse 'V' slots.
- Schedule 80 PVC internal manifolds.

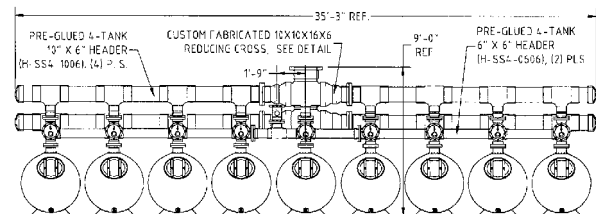
## Systems Feature:

- Schedule 80 Face Piping is factory-assembled and provided with anchoring templates for ease of reassembly and anchoring in the field.
- Face Piping employs grooved couplings for ease of installation - provides relief for field variations.
- 6" Backwash Valves (on most models) includes a **transparent ABS valve housing and cover** to readily display valve positioning and provide convenient maintenance inspections.
- Optional 24 VAC Re-Programmable Automatic Backwash Controller includes flow meter and temperature probe for real-time display.
- Optional Backwash Controller Interface provides convenient interface with multi-purpose controllers (e.g. Chemtrol®, Acu-Trol™) and PLC's.
- Optional Para-Pump Pressure Booster System provides consistent valve-actuation where city-water pressure is unreliable.

*Dual Construction Method:  
Shell & Winding*



*Semi-Automatic Single-Knob Backwash Control is Standard*



*Custom Face-Piping Kits Available for your Application.*